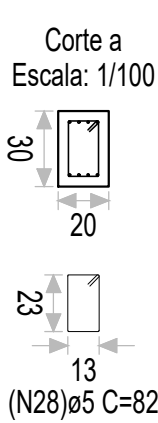
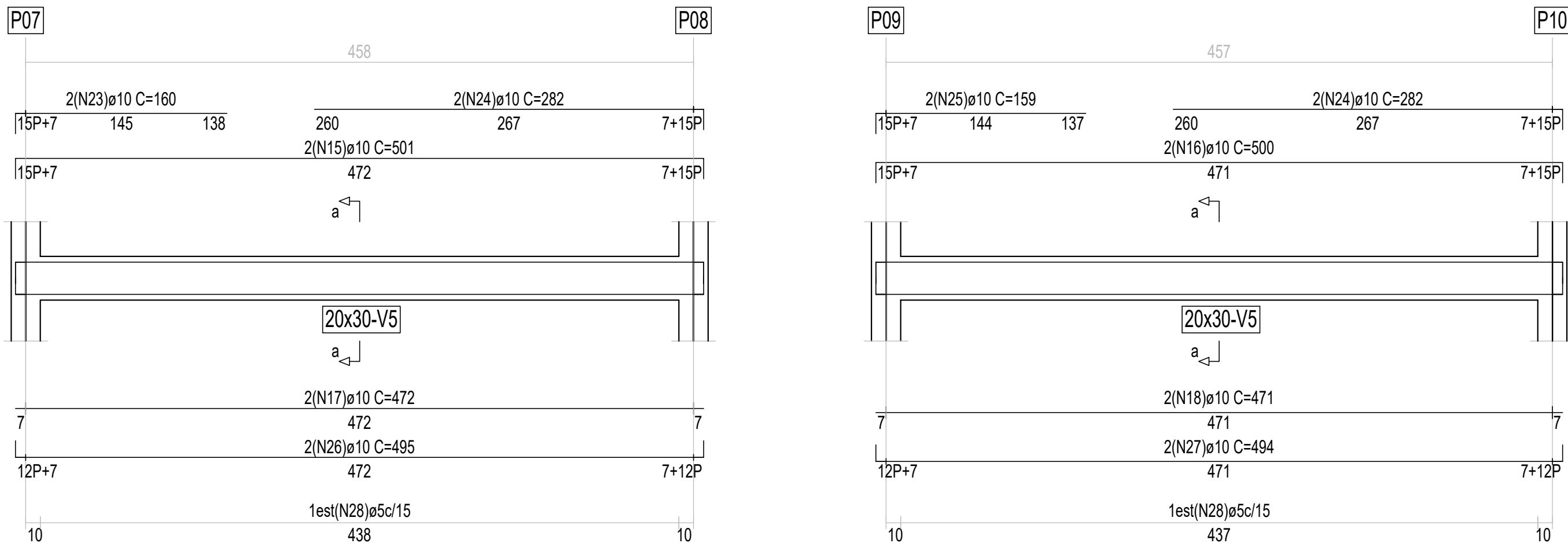
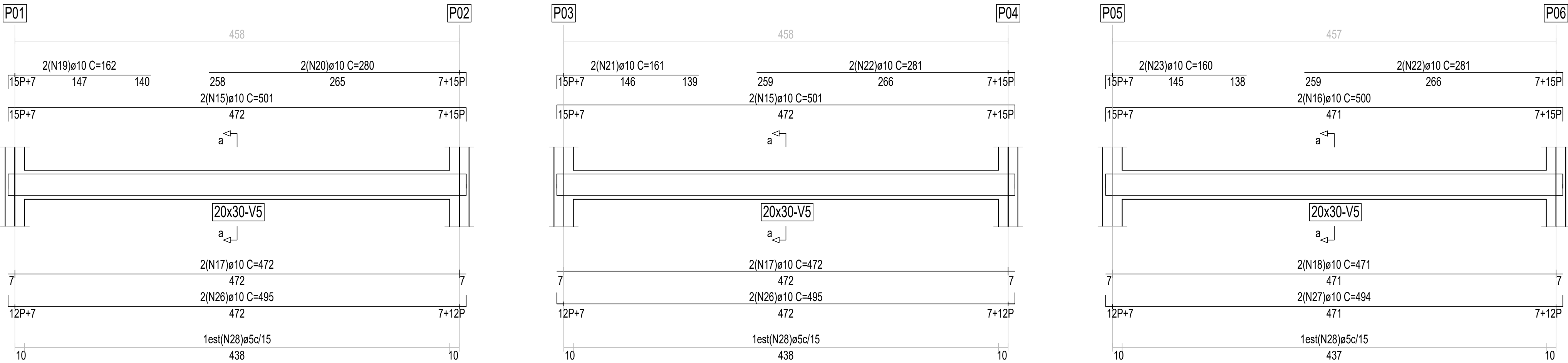


V5



Barra	ID	Qt.	Diâm	Comprimento unitário (cm)		Total			
				P	C. Reto	P	Total		
				(cm)	(cm)	(kg)			
V5	Vigas do pórtico				Aço CA-50 N 5098 Kg/cm2				
	15	6	ø10	15	472	15	502	3012	19,164
	16	4	ø10	15	471	15	501	3004	12,751
	17	6	ø10	15	472	15	502	2832	18,019
	18	4	ø10	15	471	15	471	1884	11,987
	19	2	ø10	15	147	162	324	2,062	
	20	2	ø10	15	265	15	280	560	3,563
	21	2	ø10	15	146	161	322	2,049	
	22	4	ø10	15	266	15	281	1124	7,152
	23	4	ø10	15	145	160	640	4,072	
	24	4	ø10	15	267	15	282	1128	7,177
	25	2	ø10	15	144	159	318	2,023	
	26	6	ø10	12	472	12	496	2976	18,938
	27	4	ø10	12	471	12	495	1980	12,595
	28	150	ø5			82	12300	19,565	
							Total+10,0%	155,229	

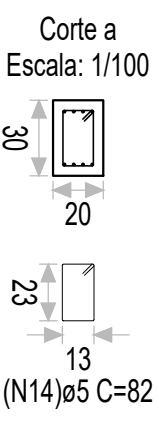
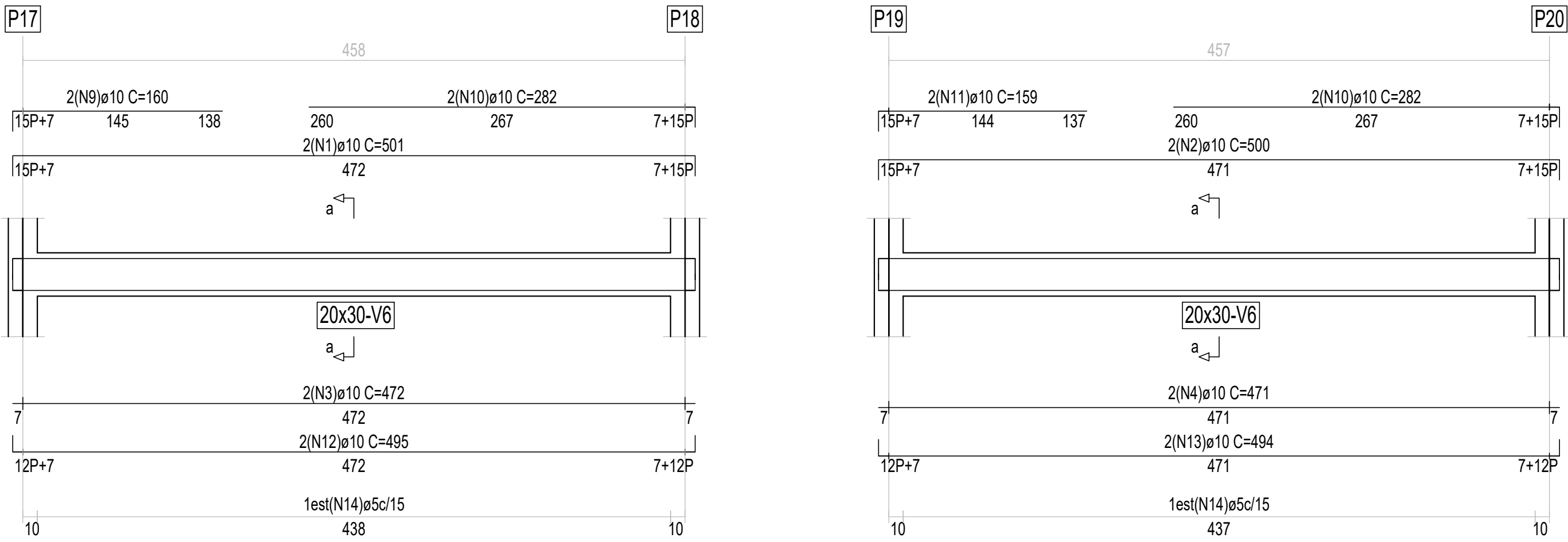
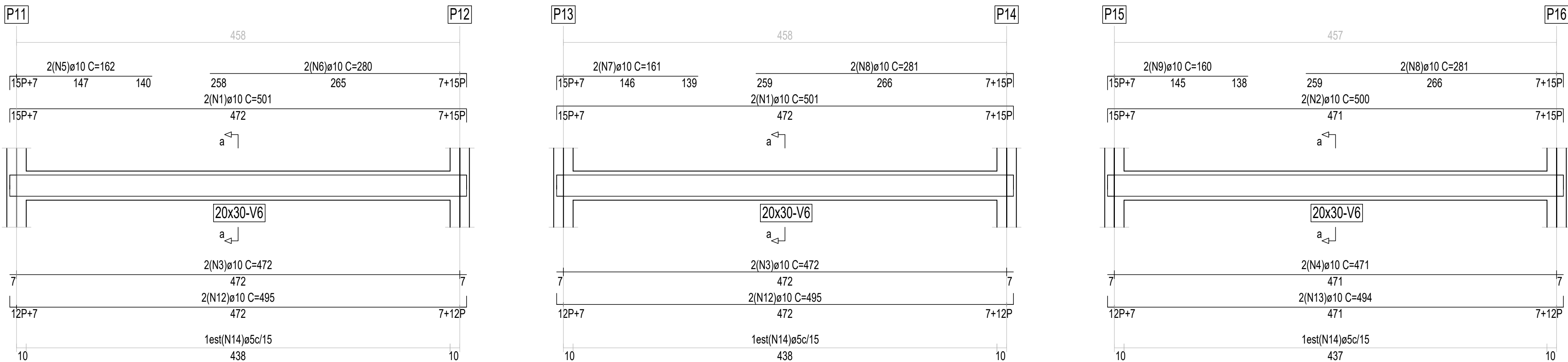
FECHAMENTO E REFORMA DA QUADRA DE ESPORTE JARDIM PARQUE INDUSTRIAL

DETALHADOS :
DETALHES DAS ARMADURAS DAS VIGAS - PLANO 400

ESCALA 1 : 30 ART N° 28027230200645021 10/12

DESENHO ELABORADO EM ZWCAD

V6



Barra	ID	Qt.	Diâm.	Comprimento unitário (cm)		Total	
				P	C. Reto	P	C. Total
				Vigas do pórtico		Aço CA-50 N 5098 Kg/cm2	
V6	1	6	ø10	15	472	15	502
	2	4	ø10	15	471	15	501
	3	6	ø10	15	472	15	502
	4	4	ø10	15	471	15	501
	5	2	ø10	15	147	162	324
	6	2	ø10	15	265	15	280
	7	2	ø10	15	146	161	322
	8	4	ø10	15	266	15	281
	9	4	ø10	15	145	160	320
	10	4	ø10	15	267	15	282
	11	2	ø10	15	144	159	318
	12	6	ø10	12	472	12	496
	13	4	ø10	12	471	12	495
	14	150	ø5			82	12300
						Total+10,0%	155,229

FECHAMENTO E REFORMA DA QUADRA DE ESPORTE JARDIM PARQUE INDUSTRIAL

DETALHADOS :
DETALHES DAS ARMADURAS DAS VIGAS - PLANO 400

ESCALA 1 : 30 ART N° 28027230200645021 11/12

DESENHO ELABORADO EM ZWCAD

TOTAL AÇO VIGAS

Total+10,0% (kg)		
Aço CA-50 N 5098 Kg/cm2		
ø5	43,044	
ø10	267,414	
Total	310,458	